

COUNTRY PRESENTATION - MALAYSIA



E-WASTE MANAGEMENT IN MALAYSIA

NORAZLINA BINTI AB HALIM
DEPARTMENT OF ENVIRONMENT
PUTRAJAYA, MALAYSIA

E-WASTE: REGULATIONS & GUIDELINES



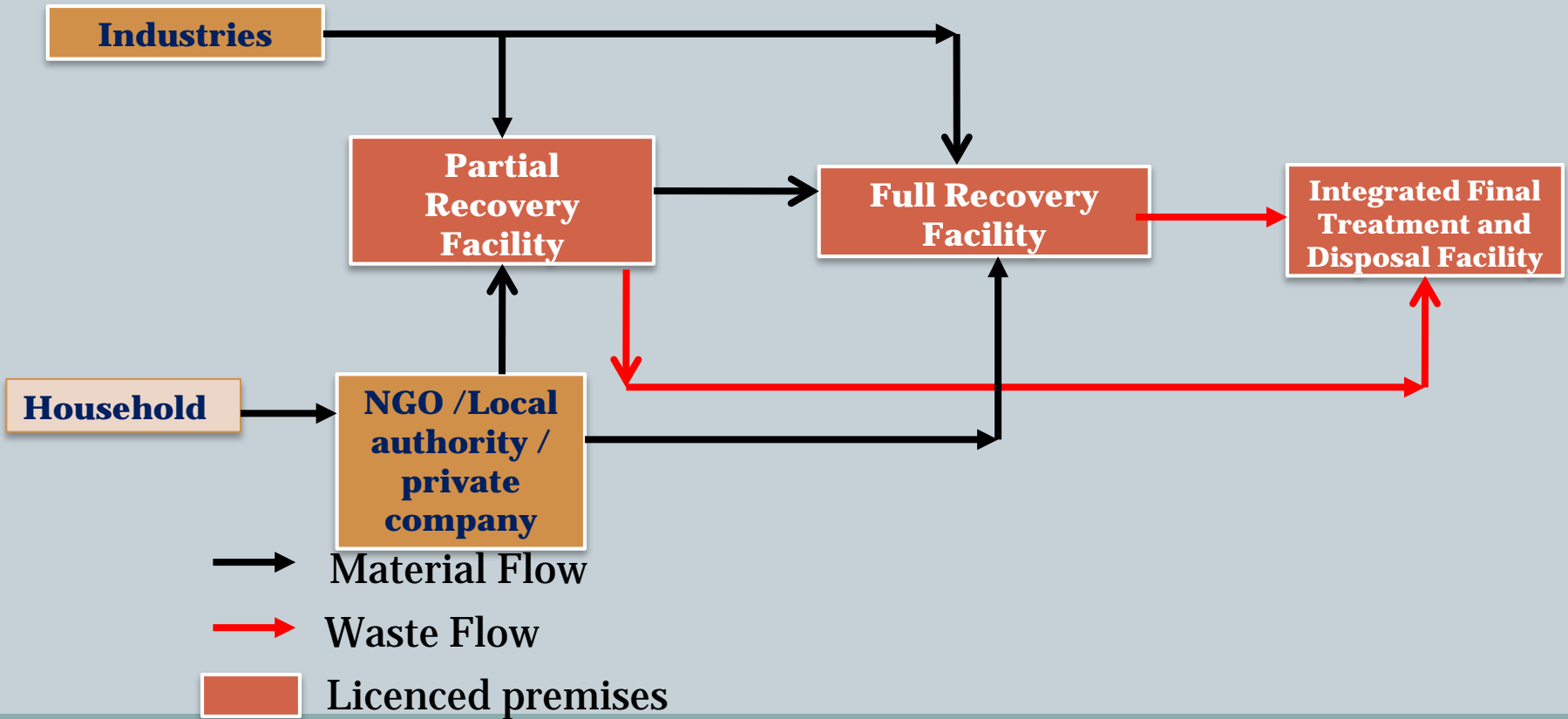
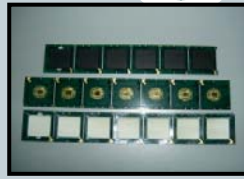
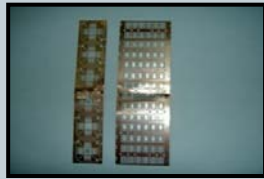
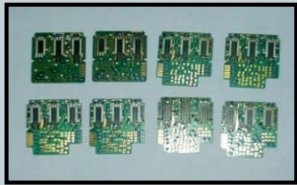
- ❑ E-waste has been regulated in Malaysia since 2005 under Environmental Quality (Scheduled Wastes) Regulations, 2005.
- ❑ Environmental Quality (Prescribed Premises) (Treatment Disposal Facilities for Scheduled Wastes) Regulations, 1989 (control on collection, treatment, recycling and disposal of scheduled waste including e-waste)
- ❑ Guidelines for the Classification of Used Electrical and Electronic Equipment in Malaysia”, 2nd Edition 2010

ENVIRONMENTAL QUALITY (SCHEDULED WASTES) REGULATIONS 2005



- ❑ Cradle-to-grave principle
- ❑ Include 77 categories of scheduled wastes
- ❑ SW 110 - wastes from the electrical and electronic assemblies containing components such as accumulators, mercury-switches, glass from cathode-ray tubes and other activated glass or polychlorinated biphenyl-capacitors, or containing cadmium, mercury, lead, nickel, chromium, copper, lithium, silver, manganese or polychlorinated biphenyls

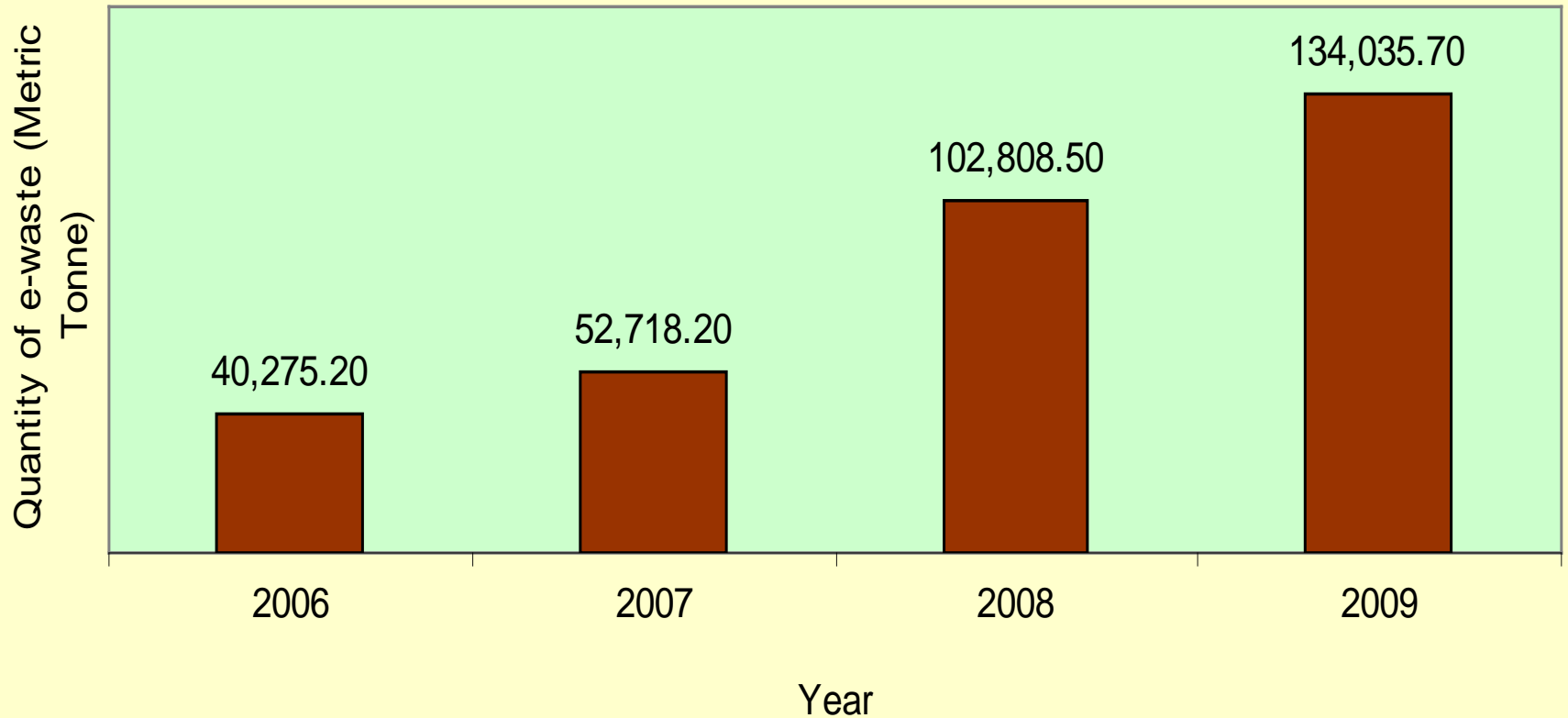
E-WASTE MANAGEMENT IN MALAYSIA



GENERATION OF E-WASTE



Quantity of e-waste Generated in Year 2006-2009



DISTRIBUTION OF E-WASTE RECOVERY FACILITIES IN MALAYSIA



STATE	PARTIAL RECOVERY FACILITIES	FULL RECOVERY FACILITIES
Johor	17	3
Kedah	12	1
Melaka	12	3
Negeri Sembilan	5	1
Perak	4	0
Pulau Pinang	37	6
Sarawak	5	0
Selangor	25	2
W.P. Kuala Lumpur	5	0
Total	122	16

CHALLENGES IN E-WASTE MANAGEMENT FOR GOVERNMENT, PRIVATE SECTOR AND COMMUNITIES



Household Hazardous Waste Including E-waste

- Voluntary take back scheme of e-wastes has not been implemented widely by the producer/importer of electronic and electrical equipment, hence a mandatory requirement of take back scheme is required
- A detail study on how to establish take back scheme of e-waste in Malaysia need to be conducted

POSSIBLE OPTIONS / OPPORTUNITIES TO STRENGTHEN E-WASTE MANAGEMENT



- ❑ Establishment of take back scheme of e-waste in Malaysia

- ❑ Learn about on how the take back scheme is established and implemented in other countries

- ❑ Informations:
 - ❖ Model used
 - ❖ Input that is required to develop an appropriate model
 - ❖ Financial scheme to sustain the model
 - ❖ Issues / challenges in implementing the model

POSSIBLE OPTIONS / OPPORTUNITIES TO STRENGTHEN E-WASTE MANAGEMENT



- Specific regulations
- Co-operations with National Solid Waste Management Department (NSWMD) on how to effectively collect the e-wastes from the residential areas
- Awareness campaign



THANK YOU